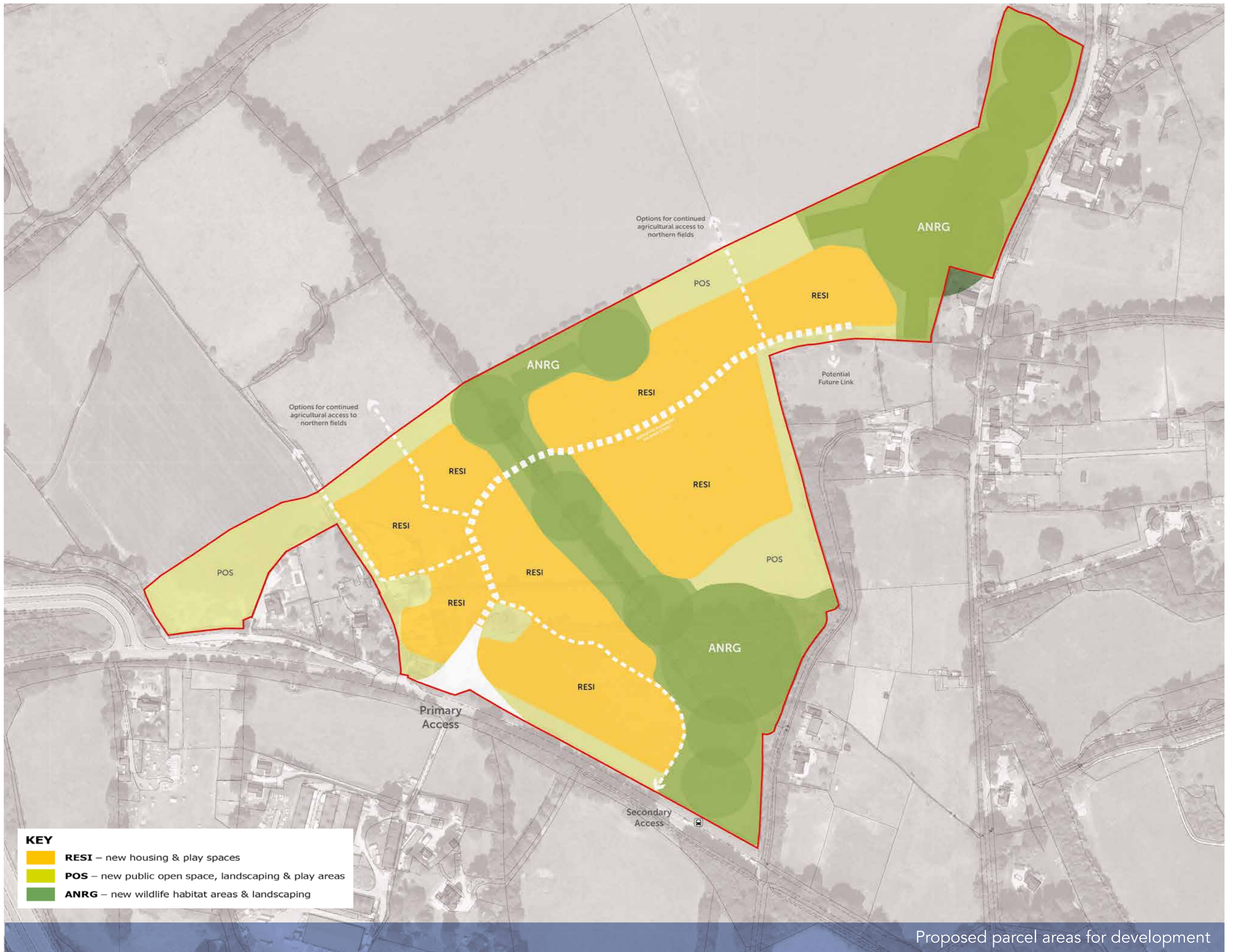


## OUR DRAFT PROPOSALS



### Our Draft Proposals

Bloor Homes and the Barker-Mill Estates are working towards the submission of an Outline planning application for this site. **As such, our proposals seek approval for both the principle of developing this site with new homes, open space and the associated access for the scheme. Other detailed elements, such as the design and layout of the homes, will be dealt with by future Reserved Matters planning applications, when further consultation will take place.**

Our emerging concept masterplan has sought to respect the site's features, such as the topography of the site, existing mature field boundaries, hedgerows, and woodlands, as well as providing a variety of new housing to meet local needs.

Our proposals include:

- **Up to 300** new homes, of which around **35%** would be designated as affordable
- A mixture of both houses and apartments
- Extensive new public open spaces, wildlife habitat areas, landscape enhancements, and local areas of play
- We plan to keep existing trees and hedgerows where possible, including Hatton's Plantation, plant new trees and create new wildlife corridors
- A new roundabout on Salisbury Road to provide vehicular access to the development, alongside local highway improvements to be agreed in consultation with Hampshire County Council and Highways England
- A network of footpaths and cycle-paths that will link to the existing network and offer sustainable connections to the future community facilities to be delivered to the south of Salisbury Road
- A new, signalised pedestrian and cycle crossing to safely cross Salisbury Road to the south
- Car parking will be provided in accordance with Council standards
- Improved local transport connections with new bus stops on Salisbury Road
- Integrated use of sustainable drainage systems, including ditches and ponds, to manage surface water drainage and water quality, along with upgrades to nearby foul sewer network to be agreed with Southern Water