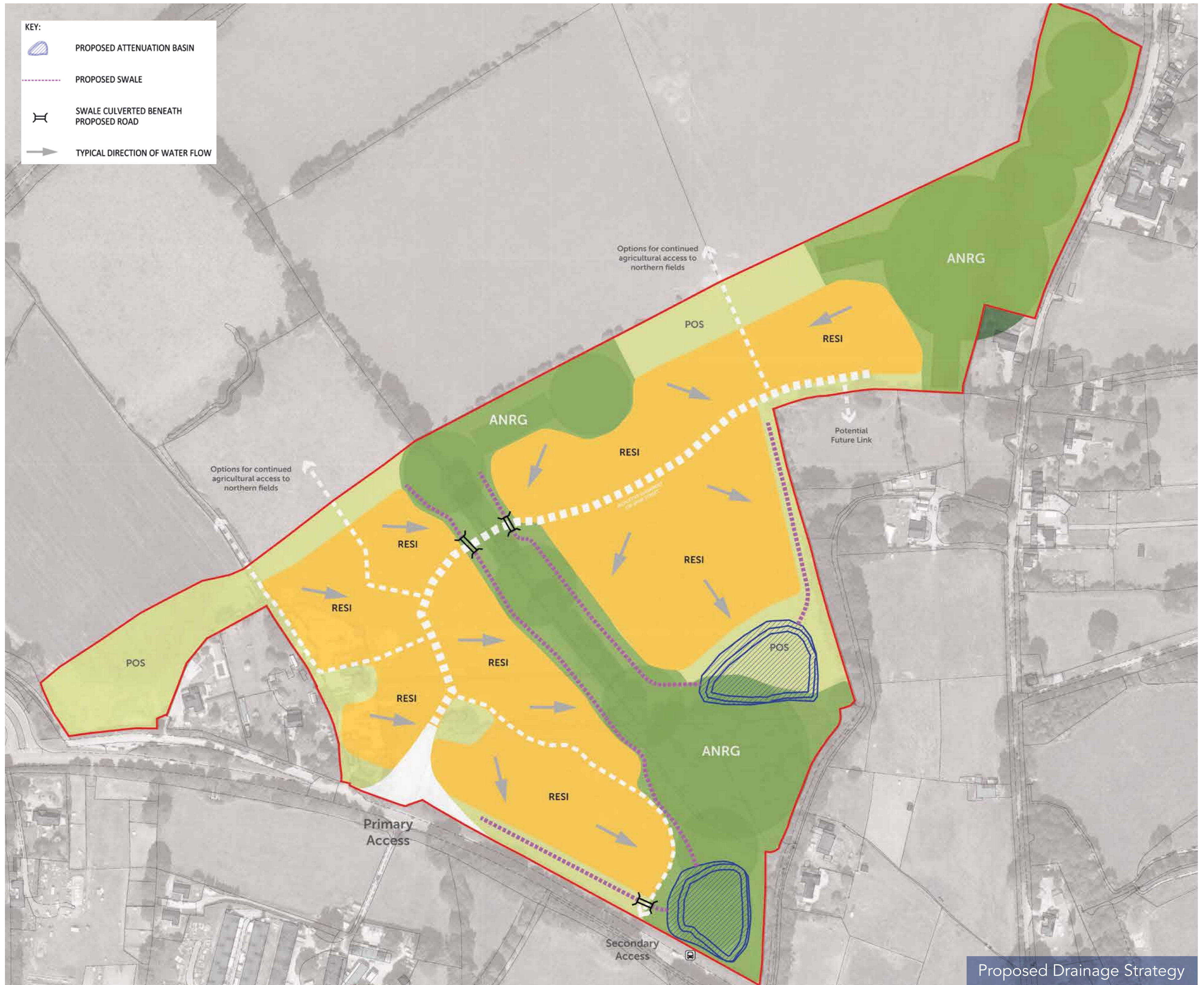


DRAINAGE



Surface Water Drainage

Bloor Homes and the Barker-Mill Estates will ensure that the drainage needs of the proposed development will be met for the domestic and surface run-off elements as follows.

- The site is located within Flood Zone 1, which means that it is at no risk of flooding from the sea.
- The proposed solution to surface water run-off from the developed site is to use **Sustainable Drainage Systems (SuDS)**, including ditches and ponds, that will:
 - Capture surface water before releasing it at a rate that reflects natural systems
 - Control the water at source
 - Offer opportunities to deliver landscaping and wildlife enhancements in various areas of the site
 - Follow the natural topography of the site and move water to two storage ponds located towards the south-eastern edge of the development
 - These will then be discharge into existing local land drains which run adjacent to the site and route southwards along Salisbury Road
 - Naturally clean the water, before it enters the local drainage system

We have carefully considered both surface water and foul water drainage in the proposals to ensure that there is **no impact on the surrounding area**.

